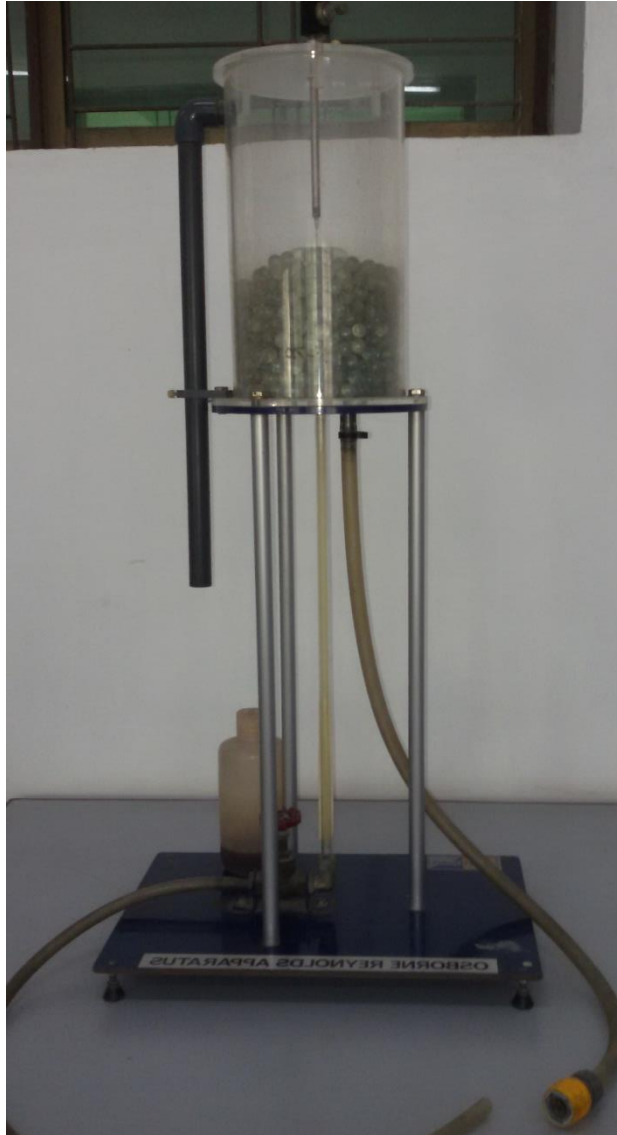


FLUID MECHANICS LAB

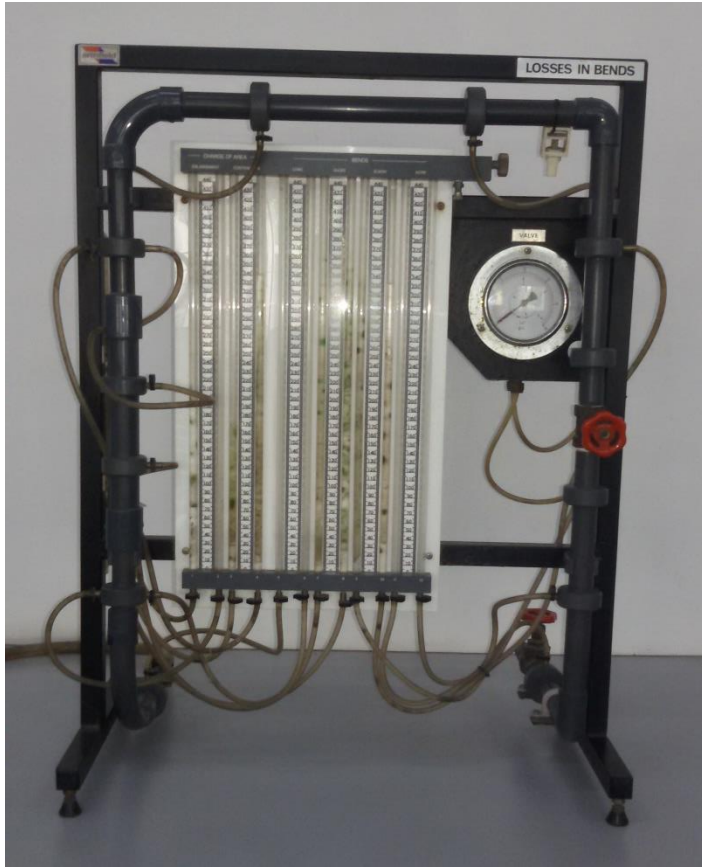
LIST OF EXPERIMENTS

1. To demonstrate the operating characteristic of two pumps running in a series pumping installation
2. To demonstrate the operating characteristic of two pumps running in a parallel pumping installation
3. To demonstrate the operating characteristic of two pumps running in a parallel and series pumping installation on armfield apparatus(Manual)
4. The use of engineering units for centrifugal compressor
5. To draw the characteristic curves of a centrifugal compressor
6. Study of wind tunnels(Open and closed Circuit)
7. To determine the pressure and velocity variation around an air foil at different free stream velocities(same angle of attack)
8. To determine the pressure and velocity variation around an air foil at different different angle of attack (same free stream velocities)
9. To find out an approximate value of the friction coefficient “ f ” for a uniform dia duct
10. To investigate the pressure recovery along a divergent duct
11. To obtain the characteristic curves of a centrifugal fan and locate the operating point
12. To draw the characteristic curves of axial flow fans

OSBORNE REYNOLDS APPARATUS



LOSSES IN BENDS APPARATUS



FREE & FORCED VORTICES APPARATUS



ORIFICE & JET APPARATUS



HYDRAULIC BENCH



