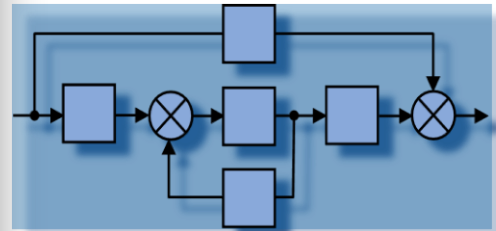


SUPCON-UET Automation Laboratory



Process Automation

Distributed Control Systems

Professional Training

Experiment Projects



Department of Electrical Engineering,
University of Engineering and Technology, Lahore.

INTRODUCTION

The SUPCON-UET Automation Laboratory was established in June, 2007. The laboratory is housed in the west-wing, ground floor, new building of the Department of Electrical Engineering.

SUPCON, a leading supplier on automation and information technology products and solutions in China, and University of Engineering and Technology, Lahore signed a contract to jointly establish a world class modern automation laboratory together, named SUPCON-UET Automation Lab. SUPCON contributed automation equipment worth US \$ 350,000 for this Lab. It is the biggest and most advanced automation lab in Pakistan.

The UET provided auxiliary equipments and more than 200 square meters space for the lab. Besides all the core equipment SUPCON also provided extended technology service for the lab.



EQUIPMENT AND FACILITIES

There is one set of SUPCON CS4000 Process Control Emulation Model (PCEM) and two sets of SUPCON Webfield distributed control system, including 2 control stations and 35 engineering stations, in the lab. The typical parameters from the PCEM are transmitted to the DCS, configured in the control stations and monitored in the engineering stations, which shows the theory and application of process control technology to the students.

The SUPCON-UET Automation Laboratory with more than 200 square meters space provides an excellent learning environment for students in the automation and control systems related courses at undergraduate and graduate levels at the UET and professional engineers from industry. It also provides a platform for research and development of automation technology for the UET teacher and students.

The lab helps the UET to increase the capacity of automation technology, and train many automation engineers for Pakistan, which will promote the development of Pakistan's automation technology.

And, it is a training center of SUPCON. All the SUPCON's customers in Pakistan can do training course(s) of SUPCON products in this lab.





EXPERIMENTS

Converter

A wide variety of control systems experiments.



Object Characteristics Testing

Single-loop PID Control

Cascaded Control

R3100

R3100

R3100

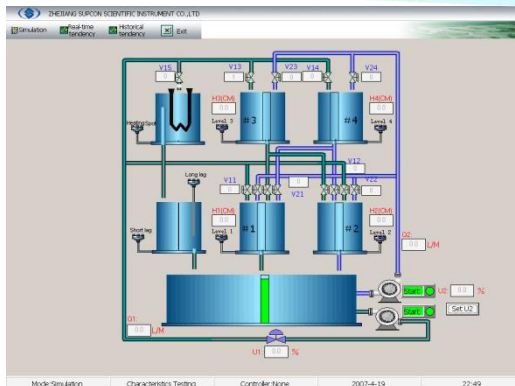
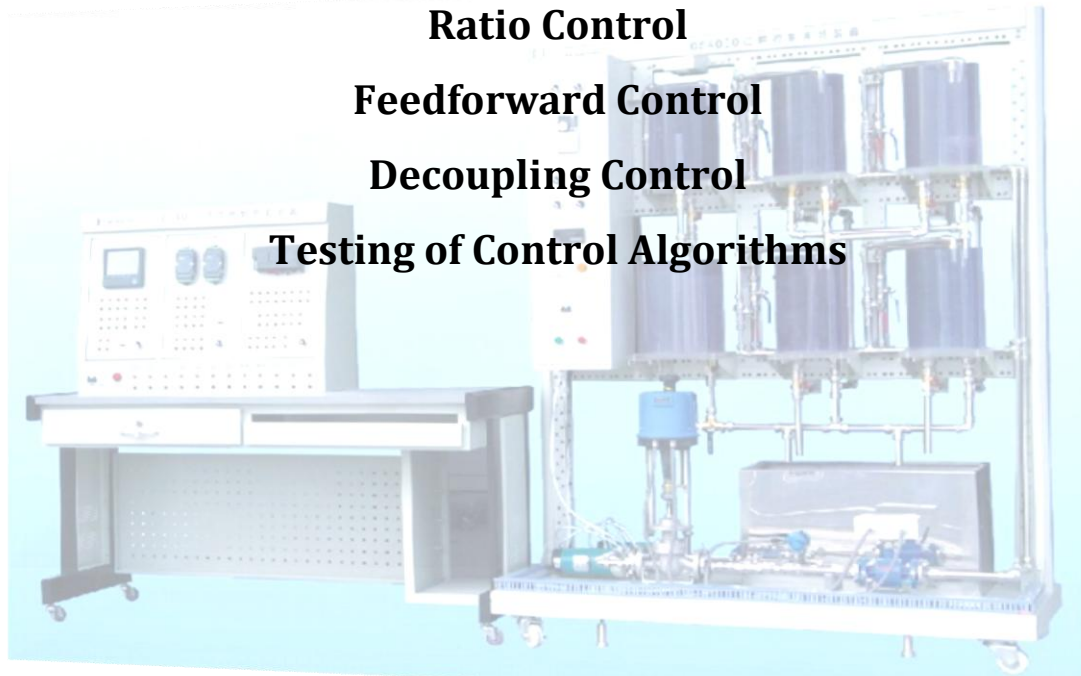
R3100

Ratio Control

Feedforward Control

Decoupling Control

Testing of Control Algorithms



CONTROL SYSTEMS GROUP



From Left to Right (s, DDC, FCS.....)

Mr Farrukh Arslan	Lecturer
Mr Rizwan Siddique	Lecturer
Mr Umar Waqar	Lecturer
Dr K M Hasan	Professor
Mr Mudassar Iqbal	Lecturer
Mr Hashim Qureshi	Lecturer

Department of Electrical Engineering,
University of Engineering and Technology, Lahore.